



TURTLE INSTALLATION INSTRUCTIONS

- Always wear personal protective equipment.
- Use the supplied parts list to check if the kit contains all the parts.
- Thoroughly clean the installation surface before installation.
- The product may only be installed by trained personnel.

If you have to drill or grind:

- Always wear the correct eye and hearing protection.
- Remove all material swarf before installation.
- Do not use compressed air to remove swarf, as this can cause injuries.

Installation kit parts

 <p>Complete installation kit suitable for dry container and cooler</p>	 <p>6 x M10 (securing) nuts (5115035)</p>	 <p>6 100-mm M10 threaded rods</p>	 <p>2 stainless-steel gusset plates</p>
	 <p>6 x M10 washers (5115043)</p>	 <p>2 x shim rubbers</p>	 <p>3 x filling tube (Only use with coolers, tailor-make)</p>
	 <p>6 x red plastic caps (5127008)</p>	 <p>6 x black plastic caps (5127007)</p>	

Tools required

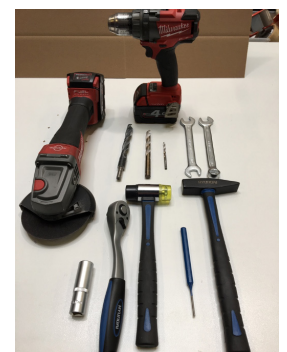
- Drill
- Angle grinder
- Nylon-faced hammer and steel hammer
- Centre punch
- Socket wrench with long 17-mm socket
- 2 x open-ended 17-mm spanners
- 4-mm drill bit
- 11-mm drill bit
- 16-mm drill bit



Always secure nuts with threadlocker.

Locktite 243 - 50 ml

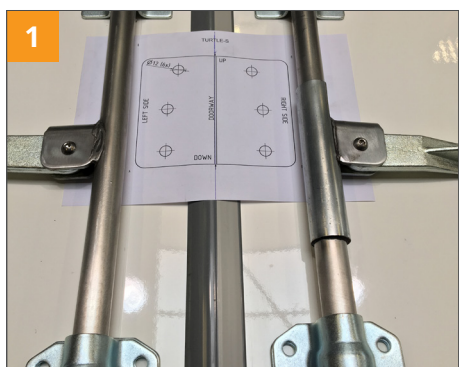
Item no. 1335886



Important information! Read these instructions carefully before starting the installation.

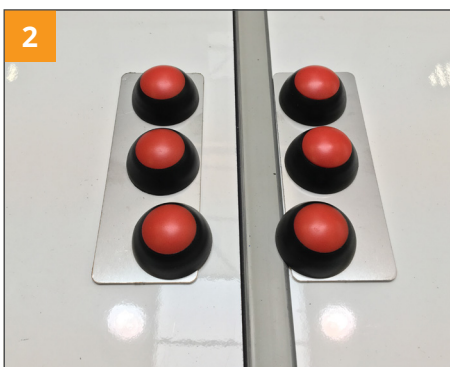
TURTLE INSTALLATION INSTRUCTIONS

PREPARATION FOR INSTALLATION



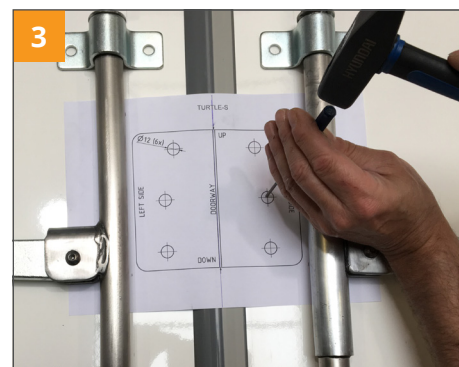
1 First, it is necessary to check whether the lock to be installed fits in the place where it is to be installed. **Watch out for bars in the door!** Use masking tape to keep the templates in place.

We recommend installing the Turtle at eye level between the locking bars.



2 Also check on the inside of the trailer if there's enough room to install the lock correctly. There should be no unevenness or obstacles in the door.

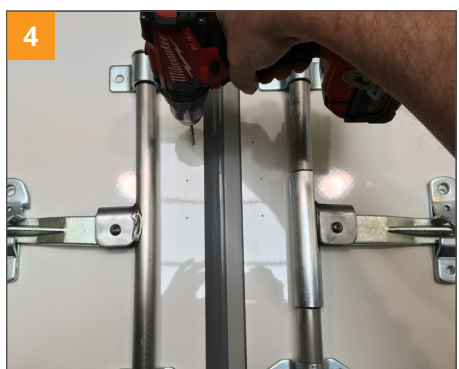
See drilling template annex.



3 You can now definitively place the template in the required spot. The template has a centre line which must be aligned with the separating line between the 2 doors. NOT on the ends of the rubber. **Tip:** Measure both Turtle parts to see whether they are at the same height.

Punch a centre point in the centre of the cross so that the drill stays in place during initial drilling.

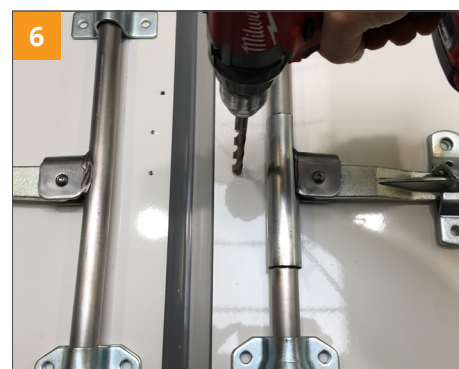
DRILLING



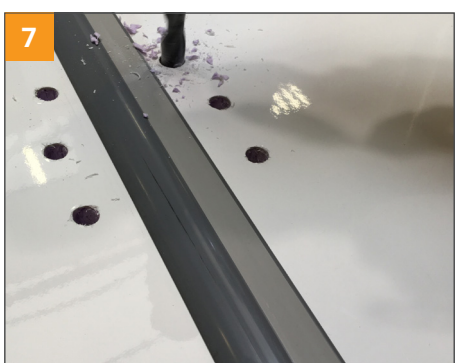
4 There are 6 points on the template where holes have to be drilled.



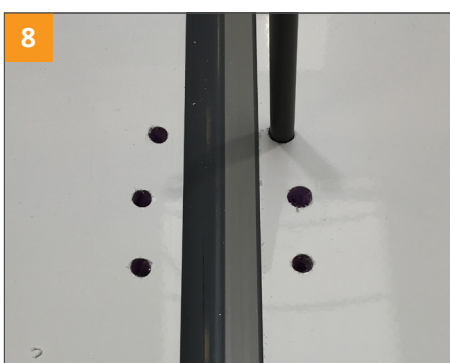
5 Start by pre-drilling with a 4-mm drill bit. This must be drilled right through if possible.



6 The holes must be drilled out to 11 mm so that the threaded rods pass through the holes. This must be drilled right through too, keeping the drill as straight as possible.

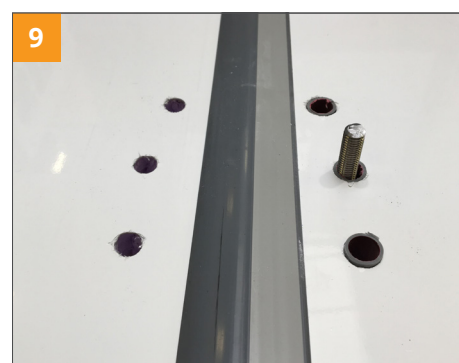


7 The holes must be drilled out to 16 mm on the inside of the door. This should NOT be drilled through. It should be drilled to the other side, but not through. **DRILL CAREFULLY!** (This applies to all 6 holes.)



8 **Only applicable in insulated doors (coolers):**

The PVC pipe provided is inserted in the 16 mm holes. This must be cut to the right length; flush with the surface of the door. The tubes ensure that the distance between the door panels is maintained when the bolts securing the lock are tightened.



9 Check whether the threaded rods fit through the holes.

TURTLE INSTALLATION INSTRUCTIONS

THREADED RODS



Now prepare the Turtle for installation. The threaded rod must first be secured in the Turtle, using thread lock and two M10 nuts.



To tighten a threaded rod in a hole, place two nuts on the rod and tighten them against each other,



so the threaded rods can be tightened in the Turtle.

LOCK INSTALLATION

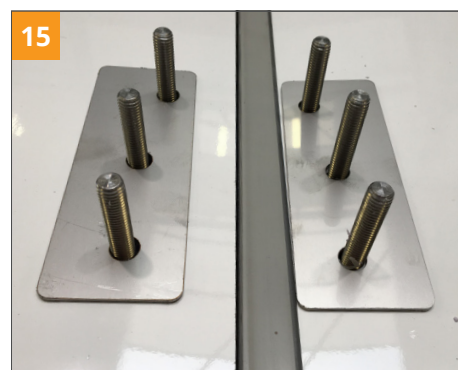


Rubbers are inserted between the Turtle and the door. These are also used to raise the height of the lock to the same height. The doors will not always close flush. There is almost always a door that lies lower than the other door.

Cut away the door rubber if necessary. The less play, the greater the safety.



When the Turtle is on the door (not yet secured), check whether the Turtle is even and straight.



Stainless steel plates are placed over the threaded rods (provided in the kit) on the inside of the door. These plates ensure that pressure is distributed on the door evenly.



The order in which the fastening materials are installed. Install the washer and (securing) nuts.



To adjust the lock, everything must be tightened by hand first, so that there is still a little play.



The protruding threaded rod must be ground off first, because red caps will be fitted on it later.

TURTLE INSTALLATION INSTRUCTIONS

FINISHING

19



Now check to see whether the lock falls neatly into the Turtle and locks easily.

20



If the lock fits properly, tighten the Turtle firmly (not too tightly, otherwise it will cause an indentation in the door).

21



For a nice finish, there are red caps in the kit which you can install. Do not, however, hit the caps too hard, to prevent damage.

END RESULT



